

chooselife

A national strategy and action plan
to prevent suicide in Scotland

Background to Local Action Plan

South Lanarkshire

August 2005

Local Information

South Lanarkshire is located in the Central Belt of Scotland and straddles the upper reaches of the River Clyde, extending into the Southern Uplands. In population terms, South Lanarkshire, with 302,110 people is the fifth largest local authority in Scotland. It covers 177,193 hectares, almost 80% of which is in agricultural use. The area encompasses a diverse mix of urban and rural environments covering four main areas:

- Clydesdale
- East Kilbride
- Hamilton
- Rutherglen and Cambuslang

Its major settlements lie in the north of the Council area and include Hamilton, the former county town, the former New Town of East Kilbride, and smaller towns such as Cambuslang and Rutherglen which lie close to the City of Glasgow. The rural area includes former market towns such as Lanark and Strathaven and former mining settlements such as Forth and Carluke. (Stronger Together: The South Lanarkshire Community Plan (2002))

More local information can be obtained at www.step.gb.com

Particular Issues and Groups/ Linking with National Policy at local level

South Lanarkshire Council compiled a template around the national objectives and asked agencies in the area and connected to the area, to complete the template. This template assisted in identifying where there were gaps at a local level, in relation to the national objectives. At a local level South Lanarkshire Council has engaged in a wide ranging partnership basis in the form of a Steering Group

Within SLC the following groups are being addressed in 2005:

- Children (especially looked after children) – ‘awareness raising’ sessions in schools to commence in 2005.
- Young people (especially young men) Community Theatre Workshops aimed at but not exclusively for this group have commenced. Hamilton Academicals Football Club has been approached regarding an awareness raising event and a proposal paper is being drafted for this event.
- People with mental health problems (in particular those in contact with mental health services and those with a severe mental illness such as people with severe depression or severe anxiety disorders) Theatre Work Shops within an acute psychiatric setting have commenced.
- People who attempt suicide – a contact card are being developed for launch in 2005. Information is also being made available via a website <http://www.lanarkshirementalhealth.org.uk> which is due to be launched in October 2005.
- People in prison – The SPS have their own Choose Life Co-ordinator. There are no prisons within South Lanarkshire Council's boundaries, however theatre workshops have been provided in one local prison via the local Choose Life agenda covering the LA in which the prison is situated. Dungavel IRC is situated within South Lanarkshire Council's boundaries and Social Work Resources attend a consultative group at the Centre.
- People who are recently bereaved – funds being provided to enhance the service provided by CRUSE.
- People in isolated or rural communities – ASIST course provided, aimed at those working in rural areas. Part of CRUSE's remit will be to address the needs of people in rural and isolated areas. Theatre Workshops will targeted at rural areas in 2006.
- People who are homeless – ASIST training will be offered to those working with this client group.
- LGBT – contact established with national group who now sit on the Steering Group
- Minority Ethnic groups – contact established with local action group who now sit on the Steering Group.

The above elements will continue into 2006.

The following groups will be addressed in 2006:

- Children (especially looked after children) – stress relief therapies to be provided to children accommodated in Local Authority units.
- People affected by the aftermath of suicidal behaviour or a completed suicide – the development of a talking and complementary therapy service.
- People who abuse substances – suicideTALK /ASIST training will be offered to those who work with this client group.
- People who have recently lost employment, and people who have been unemployed for a period of time – consideration being given to offering ASIST to staff working in this field

Action Plan Team Profile

Full Name: Choose Life Strategy Co-ordination Group

Remit: Consultation Group focussing on the development of the Choose Life Action Plan

Chair

Name: Alex Davidson
Designation: Head of Adult Services
Organisation: South Lanarkshire Council

Number and dates of Meetings held 2004-2005:	16.3.04., 11.5.04., 15.6.04., 3.8.04., 21.9.04., 3.11.04, 17.3.05., 19.5.05., 14.7.05. Scheduled: - 21.9.05. and 10.11.05.
---	---

Members

(subject to change over time)

Alex Davidson
Social Work Resources

Paul Begley
Social Work Resources

Malcolm McAulay
Social Work Resources

Brian Moore
Social Work Resources

Michelle Dowling
Social Work Resources

Jim Hayton
Housing & Technical Resources

Stephen Kelly
Community Resources

Michelle McConnachie
Social Work Resources

Andrew Spowart
Central Policy Unit

Jo Jollie
Community Resources

Jeana Papamichail
Education Resources

Andrea Batchelor
Education Resources

Gill Bhatti
Personnel Services

Isobell MacDougall
Education Resources

Des Dickson
Education Resources

Ronnie Nelson
Personnel Services

Douglas Duff
Enterprise Resources

Alan English
Social Work Resources

Steven MacDonald
Social Work

Marie O'Neill
Education Resources

Gary Stopford
Throughcare

Debbie Kennedy
Social Work Resources

Pat Scrutton
Better Government for Older
People

Paul Comley
Co-ordinator

Mairi Brackenridge
Justice Services Manager
Social Work Resources

Ann Dowie
Criminal Justice – Administration
Social Work Resources

Jane Beresford
Greater Glasgow Health Board

Rosemary Robertson
Homeless Project
Udston Hospital

Alistair Cook
Associate Medical Director
Lanarkshire Primary Care NHS
Trust

Geoff Sage
Hamilton/Blantyre/Larkhall LHCC

Ian Mitchell
Camglen LHCC

Marilyn Aitken
Clydesdale LHCC

Jim Louden
East Kilbride LHCC

Kevin O'Neill
Lanarkshire NHS Board

Marie Hayes
ADAT
Lanarkshire NHS Board

Lena Collins
Community Mental Health Team

Nan Reid
Lanarkshire NHS Board

Joyce Mouriki
Lanarkshire Links

Shiona Mackie
Lanarkshire Primary Care NHS
Trust

Deborah Lindsay Robinson
Integration Officer
Blantyre High School

Kathleen Colvan
Integration Officer
Cathkin High School

David Bruce
Integration Officer
Ballerup High School

Jackie Kerr
Integration Officer
Woodpark Primary School

Brian McGhee
Integration Officer
Education Resources

Esther Daly
The Samaritans

Elizabeth Whitefield
Cruse Bereavement Care

Brendan Rooney
Rutherglen/Cambuslang Healthy
Living Initiative

Elizabeth Oldcorn
Health Promotion Officer
Strathclyde Hospital

Craig Winter
Turning Point

Elaine Little
Blantyre & North Hamilton SIP
Social Work Resources

Alison McMullen
Lead Clinician
Hartwood Hospital

John Coffey
Project Manager
Doing Well by People with
Depression

Gill Urqhart
Head OT
State Hospital

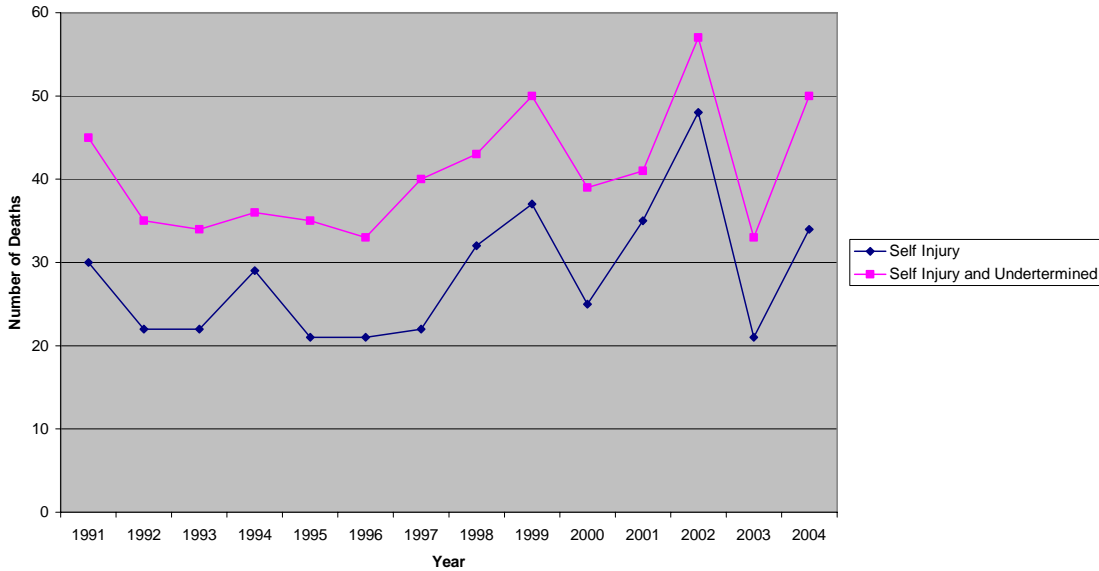
LEMAG
Lanarkshire Ethnic Minority LGBT
Action Group Glasgow
Fire Services Representative Ambulance
Representative

South Lanarkshire
Disability Forum
Accident & Emergency
Service Representative

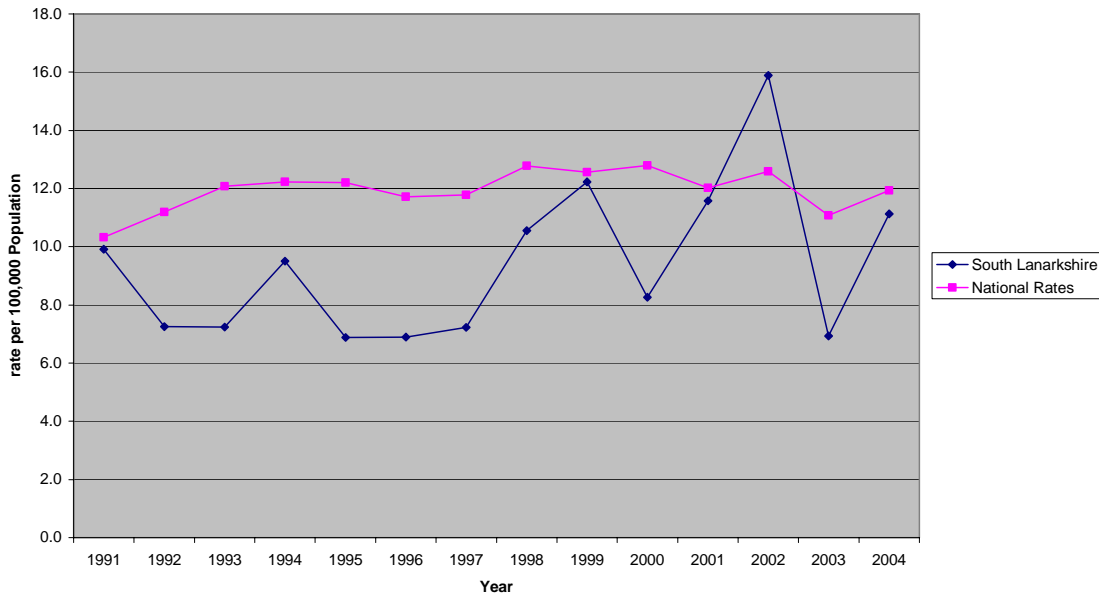
Appendix 1

Local suicide statistics and relevant trends

Number of Deaths in SLC Caused by Self Injury Compared to Deaths by Self Injury and Undetermined Intent



Rates of Death by Intentional Self Harm Local/National Comparison



The above demonstrates that the rate of suicide in South Lanarkshire is largely lower than the national rate. However it tends to follow the national trend which was reflected in the down turn in 2003 and the up turn in 2004. The type of data available does not allow for in depth analysis of the reasons for particular trends. However the rise in 2002 may have reflected the culmination of the BSE and Foot and Mouth crises. These crises affected rural/agricultural communities which account for approximately 80% of land use within South Lanarkshire Council’s boundaries.